

BERLIN, GERMANY **CAMPUS RÜTLI CR2 SPORTSHALL**

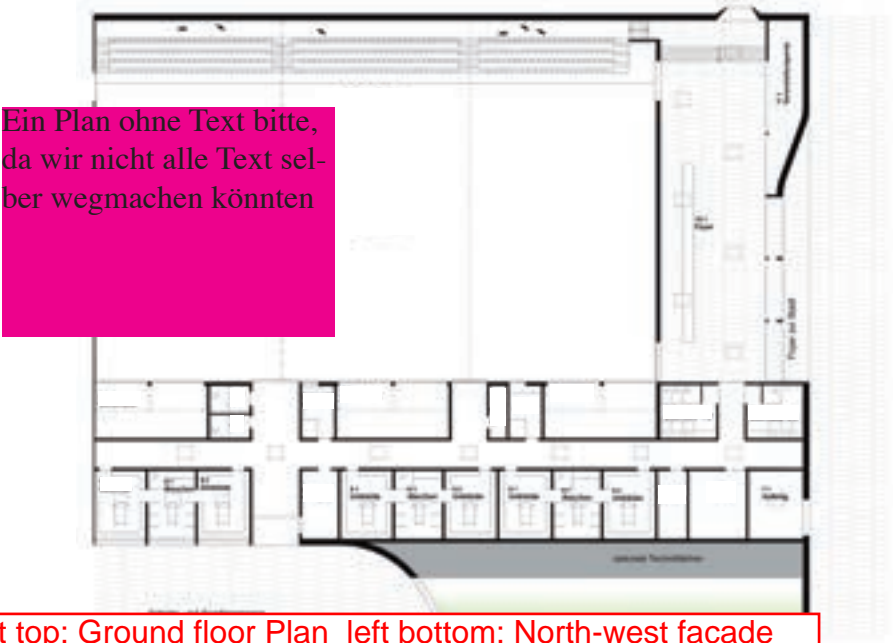
ARCHITECTS: PLUS 4930 ARCHITEKTUR **_COMPLETION:** 2013 **_GROSS FLOOR AREA:** **XXXX** M² **_TYPE OF CONCRETE:** IN-SITU CONCRETE, FAIR-FACED CONCRETE **_FUNCTION:** SPORT & LEISURE **_PHOTOS:** WERNER HUTMACHER, PLUS 4930 ARCHITEKTUR (PG. 4 B.)

floor area 2600 qm

Two separate entrance have been created in order to do justice to the double function of this sports hall and public exhibition space. The public foyer is oriented towards the new square in front of the building. The glass section of the façade welcomes visitors to events and exhibitions in the foyer. The second entrance is cut into the curving façade and directly connects the hall with the main school building and the sports fields. The volume of the hall is accessible and can also be used for sport. The ‘green wave’ stretches from the roof to the stands of the neighboring sports facilities. The building and exterior areas fuse into one entity, perfectly designed to serve all kinds of sports and activities. A clear glass volume resting on a stone base faces Pflügstraße, serving as a new reference point mediating between the school and the square in front.

Project No.: 198
Architects name: plus 4930 Architektur
Architects webpage: www.p4930.de

box will be removed before print!

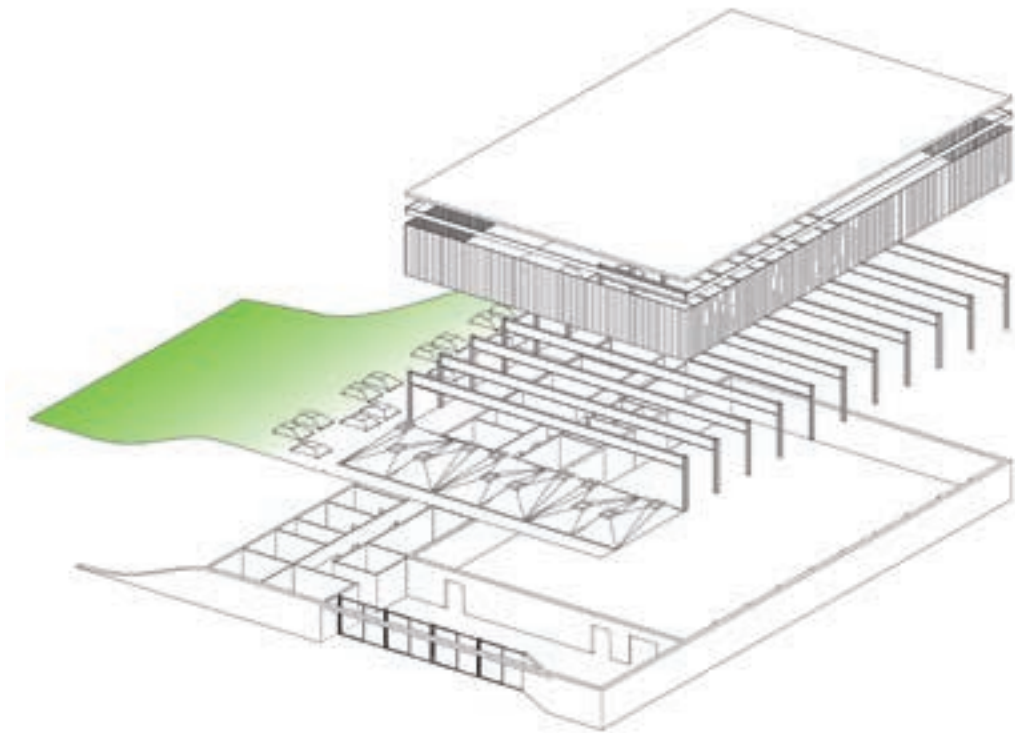


left top: Ground floor Plan left bottom: North-west facade
concrete base and translucent light box
right top: curved facade with entrance facing the school
right bottom: Sports hall interior

left: Ground floor plan_Concrete base and upper volume. right: Side facing school with school entrance_Sports hall.



wenn möglich hier 2 Querformate, der Ausstellungsraum sollte in der kompletten Breite mit Fassade und rechtem Oberlicht sichtbar sein



left: Exhibition Hall/Foyer
right top: Isometric drawing construction elements
right bottom: Main entrance to foyer/exhibition hall with curved concrete facade

left: Exhibition space. right: Isometric_Entrance to foyer and exhibition space with curving façade.

